

**FOR LEASE**

3,276 SF | Corona, CA | High-Image Free-Standing Office Building

Presented by Strata Realty, Inc. | [www.stratarealty.com](http://www.stratarealty.com) | T (951) 280-1733 | F (951) 280-1739



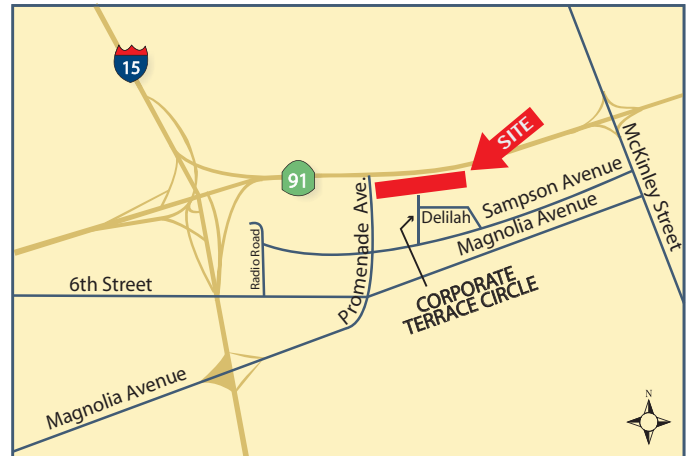
### 3,276 SF FREE-STANDING OFFICE BUILDING

#### Location

351 Corporate Terrace Circle  
Corona, CA 92879

#### Features

- Part of a 10-acre, master-planned development
- Two (2) private offices
- One (1) conference room
- Break room
- Private Restrooms
- Highly Upgraded Construction
- Extensive tenant improvement build-out
- Approximately 250,000 cars pass by the project daily
- Convenient access to I-15 and 91 freeways
- Close to restaurants, health club, and retail amenities
- Direct frontage on the 91 freeway



#### Contact:

**Timothy Hawke, SIOR**

(951) 280-1733 | [thawke@stratarealty.com](mailto:thawke@stratarealty.com)

**Adam Silverman**

(951) 280-1733 | [asilverman@stratarealty.com](mailto:asilverman@stratarealty.com)

**Jason Palda**

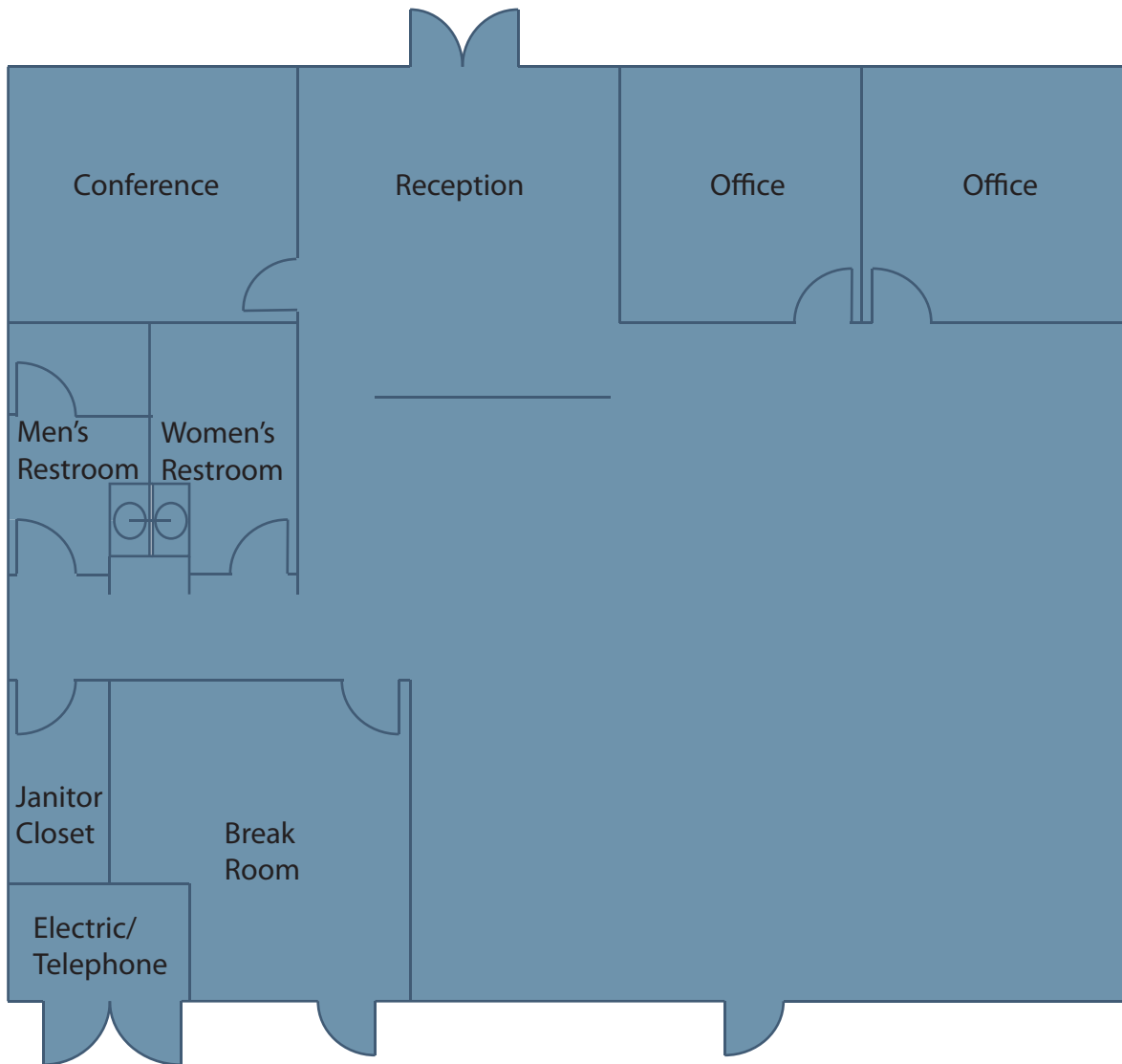
(951) 280-1733 | [jpalda@stratarealty.com](mailto:jpalda@stratarealty.com)

**FOR LEASE**

3,276 SF | Corona, CA | High-Image Free-Standing Office Building

Contact: Timothy Hawke, Adam Silverman, or Jason Palda | T (951) 280-1733

FLOOR PLAN



**DRE Information**

Timothy Hawke's license number is 01403432  
Adam Silverman's license number is 01397929  
Jason Palda's license number is 01820370